

The Challenge Machinery Company provides owner's manuals on its products solely as a courtesy to its customers. See the information below before using this manual.

These manuals are for reference only. These manuals include products which are noncurrent, unsupported or no longer produced by The Challenge Machinery Company, and are provided solely as an accommodation to our customers. By providing these manuals, The Challenge Machinery Company makes no representation or warranty as to the products, their current condition, or their suitability or fitness for use in any particular application, which are the sole and independent responsibility of the product owner and user.

Older products may not comply with current safety procedures, guidelines or regulations, and it is the product owner's and user's responsibility to evaluate the suitability and fitness of the products in their current use and application. The Challenge Machinery Company makes no representation, warranty or recommendation regarding any modifications which may be required on non-current or unsupported products. The Challenge Machinery Company assumes no liability for any modification or alteration to any Challenge product, and any such modification or alteration to any Challenge product is not authorized by The Challenge Machinery Company. The availability of these manuals is solely for the purpose of providing reference information for the products.

This manual may not be complete in all aspects of product maintenance and repair. **All products should be used only by qualified and properly trained personnel, following proper safety procedures.** All products should be regularly inspected and maintained, and their condition, application and use should be periodically evaluated by qualified personnel. Only qualified and properly trained technicians should perform maintenance, repair and replacement procedures. Attempting these procedures without proper training may cause machine damage or operator injury!

Products may be unsupported by The Challenge Machinery Company due to age or the unavailability of parts from their original manufacturer. No parts or product support will be available to repair or maintain unsupported products. Older products may not be UL listed (if the product does not have a UL label it is not a listed product), and may not comply with applicable installation or other regulations or requirements if relocated to a new facility. Many municipalities require a product to be UL listed before an electrician will connect power to them. Often the cost of updating an older product to comply with current safety regulations is greater than the value of the product.



The Challenge Machinery Company
6125 Norton Center Drive
Norton Shores, MI 49441-6081 USA

ChallengeMachinery.com

HANDY-SHARP

Instruction and Parts Manual

Series: A

Sold and Serviced by

F.105
January 2024

1.0 Warranty

*** WARRANTY INFORMATION ***

PLEASE REVIEW THE ENCLOSED WARRANTY INFORMATION SHEET

It is very important that you read and understand the conditions outlined in the *Warranty Information Sheet* attached to the outside of the shipping container of your machine.

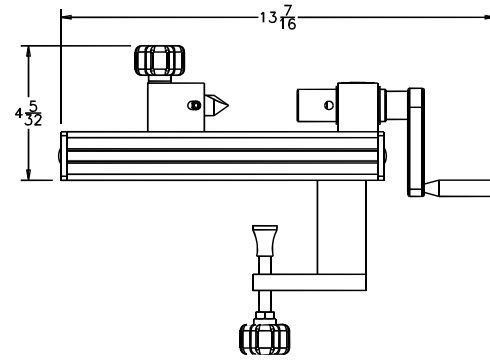
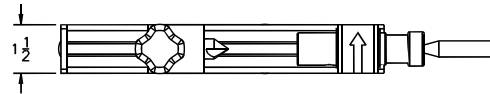
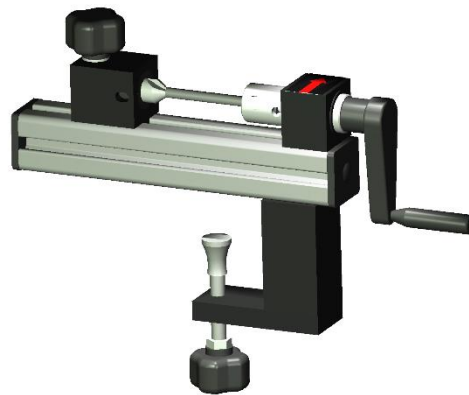
The *Warranty Information Sheet* must be filled out completely and returned to THE CHALLENGE MACHINERY COMPANY in order for the warranty to be issued for this machine.

2.0 Safety Precautions

The following list of safety precautions should be observed:

- Use caution while handling the sharpening bit. It is pointed and sharp.
- Use caution handling hollow drills. The drilling end is sharp.

3.0 Specifications



General:

Hollow drill sizes	1/8" to 1/2" diameter
Width	1-1/2"
Depth	13-7/16"
Height	4-5/32"
Net weight (approx.)	8 lbs.
Shipping weight (approx.)	9 lbs.

Packing List:

57100	Handy-Sharp (basic machine)
57108	Hone
4687	Drill Drift
4688	Drill-Ease Lube

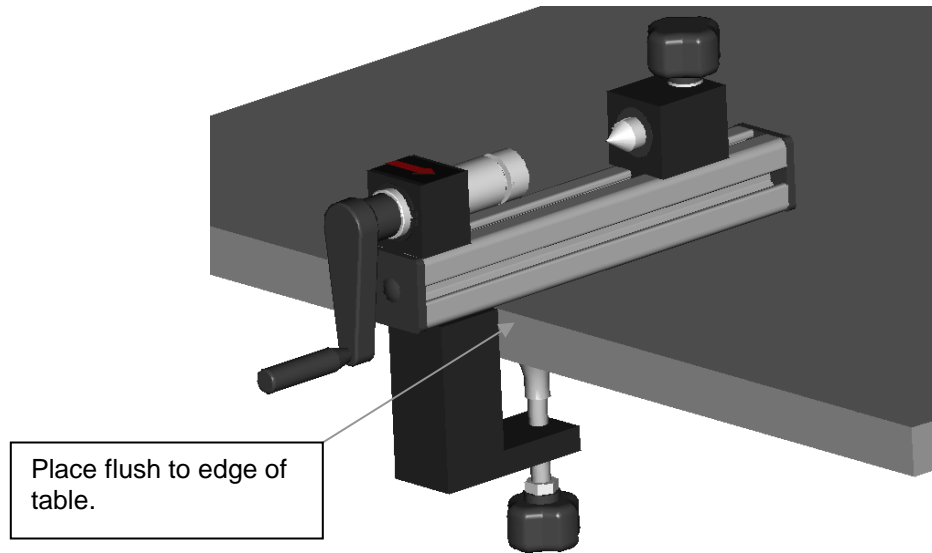
Options:

A-4950-1	Hollow Drill Chip Remover
57114	Adapter- Lawson / Nygren-Dahly

4.0 Installation and Operation

4.1 Installation

Place the Handy-Sharp on a table or bench as shown below. Tighten the lower knob until the sharpener is firmly secured to the table.



4.2 Lawson / Nygren-Dahly Adapter

Place the tapered end of the adapter into the sharpener's spindle before sharpening Lawson or Nygren-Dahly hollow drill bits.

4.3 Operation

Challenge recommends the following method of operations for best results:

1. Loosen the knob on the sharpening bit holder and slide it out of the way.
2. Place the hollow drill bit into the spindle attached to the crank.
3. Dab a small amount of Drill-Ease Lubricant on the cutting edge of the sharpening bit.
4. Slide the cutting bit against the hollow drill and apply force until the cutting bit bottoms-out in its holder. Tighten the knob on the cutting bit holder block.
5. Place the honing stone **flat** on the sharp end of the hollow drill bit. Apply slight pressure to the stone.
6. Turn the crank 15 to 20 times with the honing stone applied.
7. Remove the hollow drill bit and inspect it for sharpness.
8. Repeat this procedure until the edge on the hollow drill bit is satisfactory.

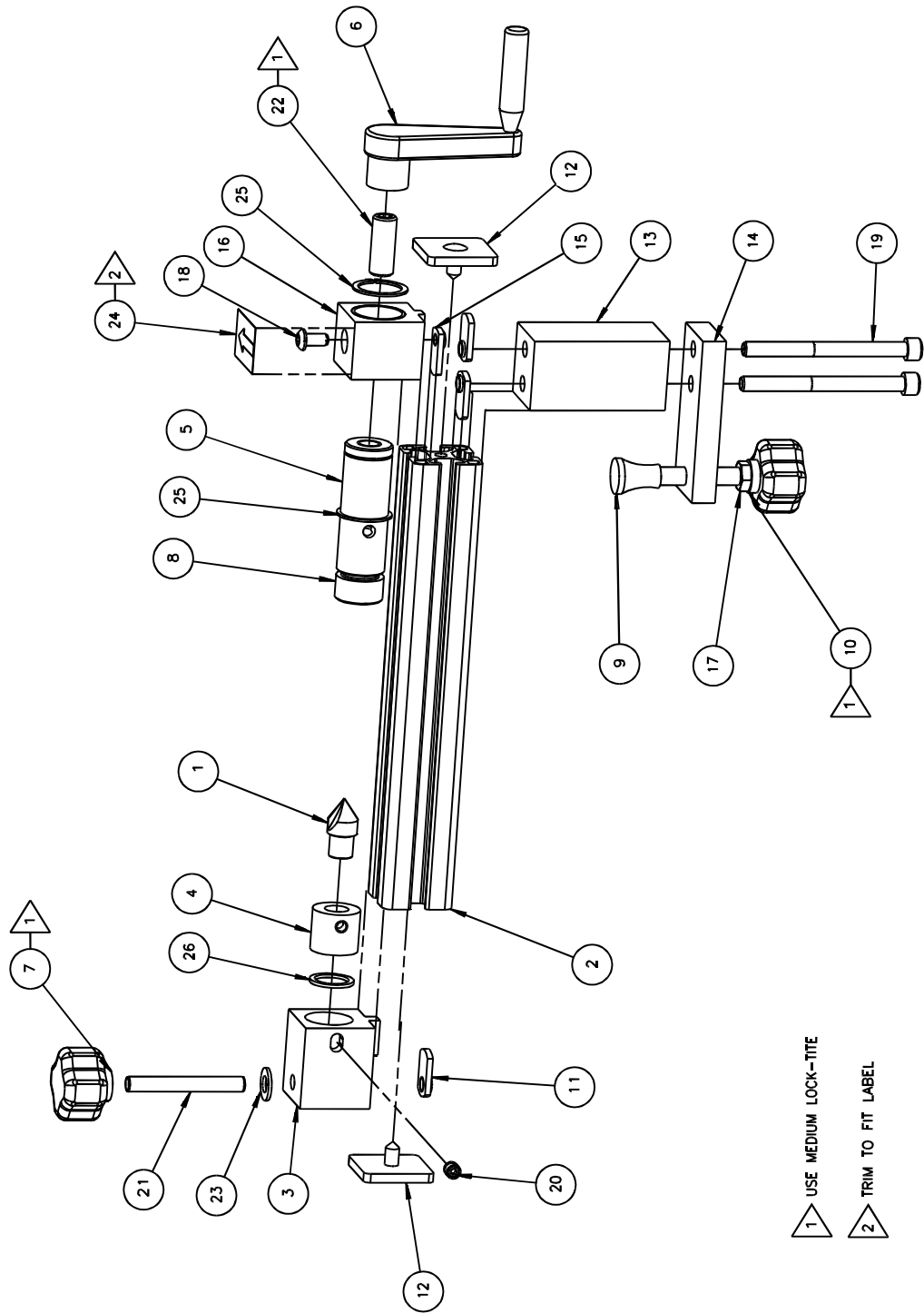
5.0 Troubleshooting

The following table lists potential solutions to operational problems:

Problem	Solutions
Drill squeaks while sharpening	Apply Drill-Ease Lubricant to sharpening bit
Hollow drills take longer to sharpen	Replace the sharpening bit with new

6.0 Parts List

6.1 Series A



6.2 Series A (continued)

Item	Part No.	Description	Qty.
1	6469	BIT- DRILL SHARPENING	1
2	57101	SLIDE BAR	1
3	57102	CUTTER HOLDER BLOCK	1
4	57103	CUTTER HOLDER	1
5	57105	SPINDLE	1
6	57106	CRANK HANDLE	1
7	57107	KNOB	1
8	57109	ADAPTER- LAWSON/NYGREN-DAHLY	1
9	57110	ADJUSTABLE GLIDE	1
10	57111	KNOB	1
11	57112	T-NUT (5/16-18)	3
12	57113	END CAP WITH FASTENER	2
13	57115	CLAMP ARM	1
14	57116	CLAMP ARM	1
15	57118	T-NUT (1/4-20)	1
16	57119	SPINDLE HOLDER	1
17	H-6424-6	NUT - 3/8-16 HEX JAM	1
18	H-6910-404	SCREW - 1/4-20 X 1/2 BUTTON HEAD CAP	1
19	H-6918-528	SCREW - 5/16-18 X 3-1/2 SOCKET HEAD CAP	2
20	H-6940-406	SCREW - 1/4-20 X 3/8 FLAT SOC SET	1
21	H-6940-540	SCREW - 5/16-18 X 2-1/2 FLAT SOC SET	1
22	H-6940-820	SCREW - 1/2-13 X 1-1/4 FLAT SOC SET	1
23	H-7321-5	WASHER - 5/16 SAE PLAIN	1
24	S-1106	DECAL- RED ARROW	1
25	S-1073-100	RETAINING RING	2
26	S-1681-5	WASHER- WAVE SPRING	1

Notes:

